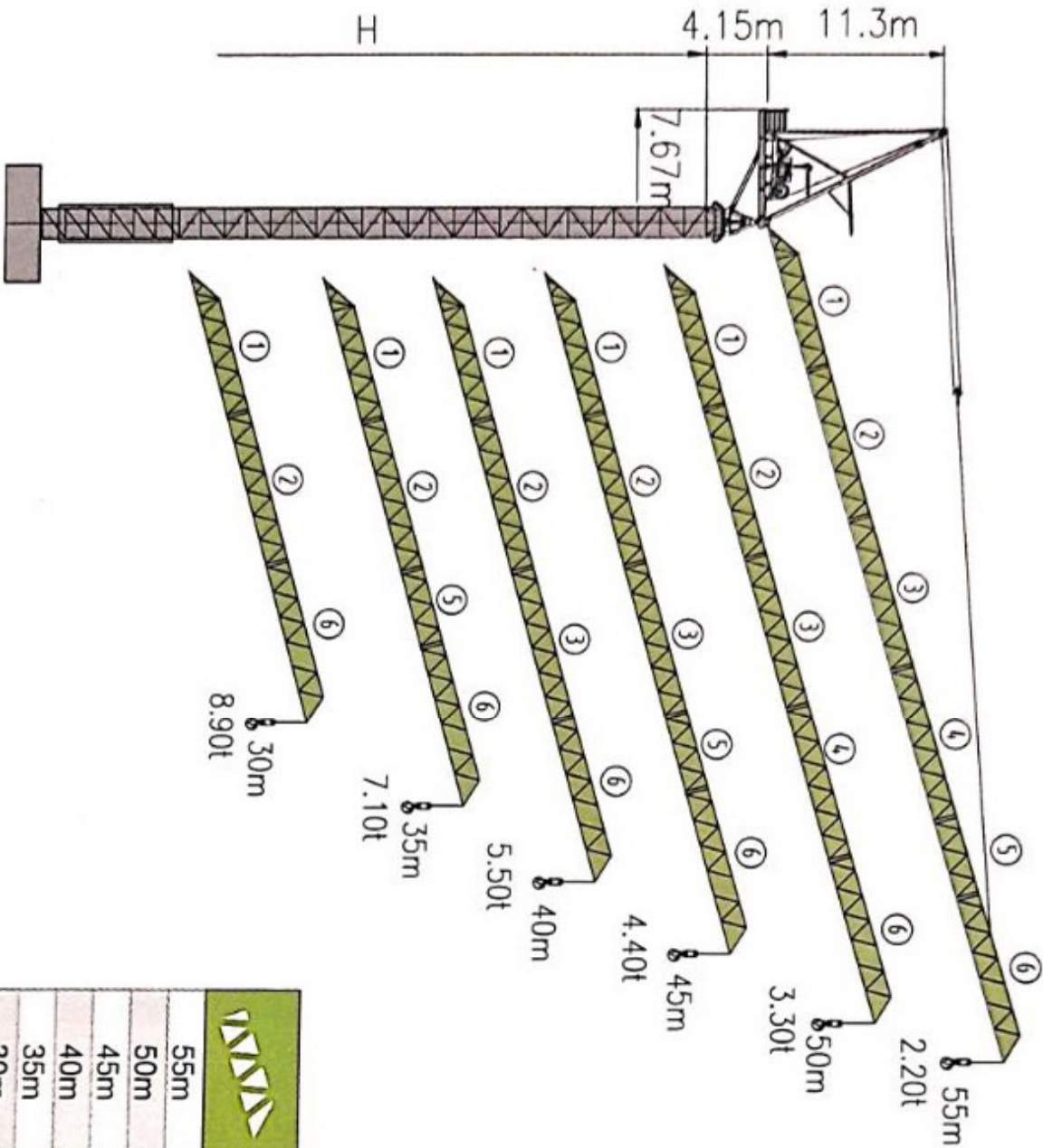




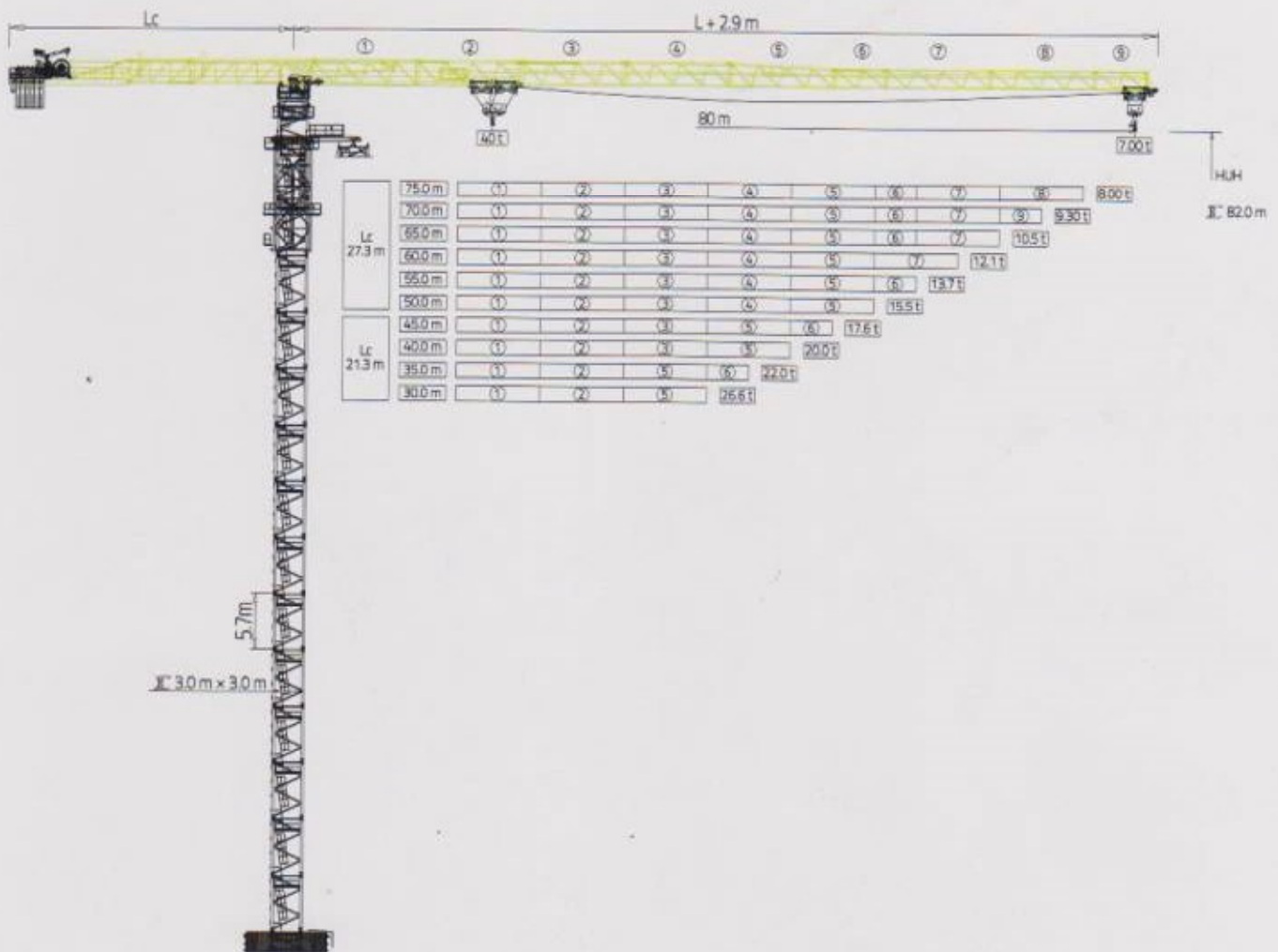
PHZ4200-12E

动臂塔式起重机
Luffing Jib Tower Crane



		H	(kg)	PHZ4200	PHZ
55m	7.67m	H1	19800	4	2
50m	7.67m	H2	19800	4	2
45m	7.67m	H3	19800	4	2
40m	7.67m	H4	19800	4	2
35m	7.67m	H5	19800	4	2
30m	7.67m	H6	18300	4	1

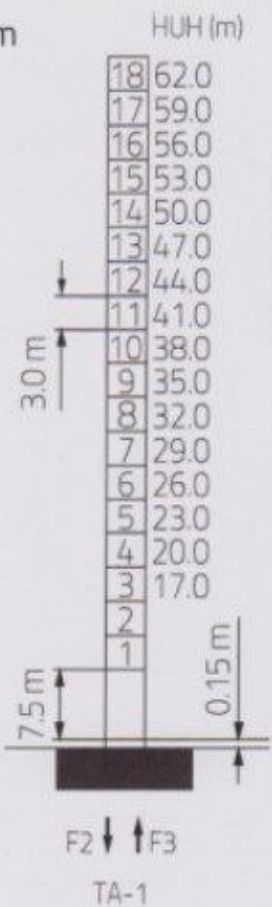
W750 40



MAST L69B (2x2x3m) WA350-16T/20T

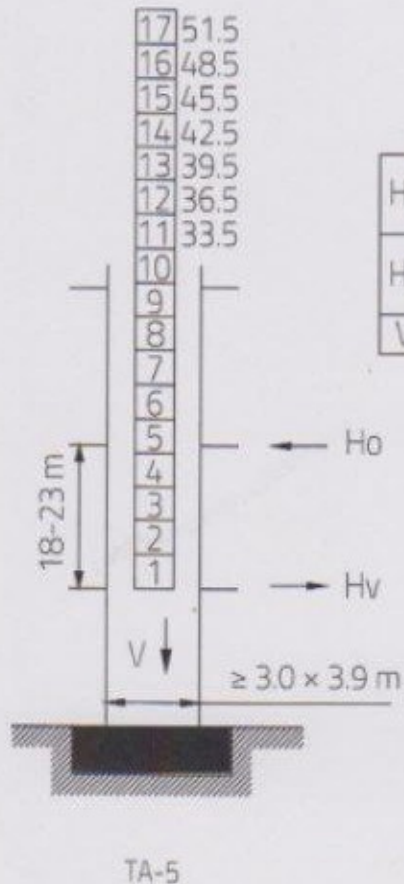
masts
reactions

2.0 m



F2	• 251 t
	• 243 t
F3	• 191 t
	• 187 t
	• 100 t

HUH (m)



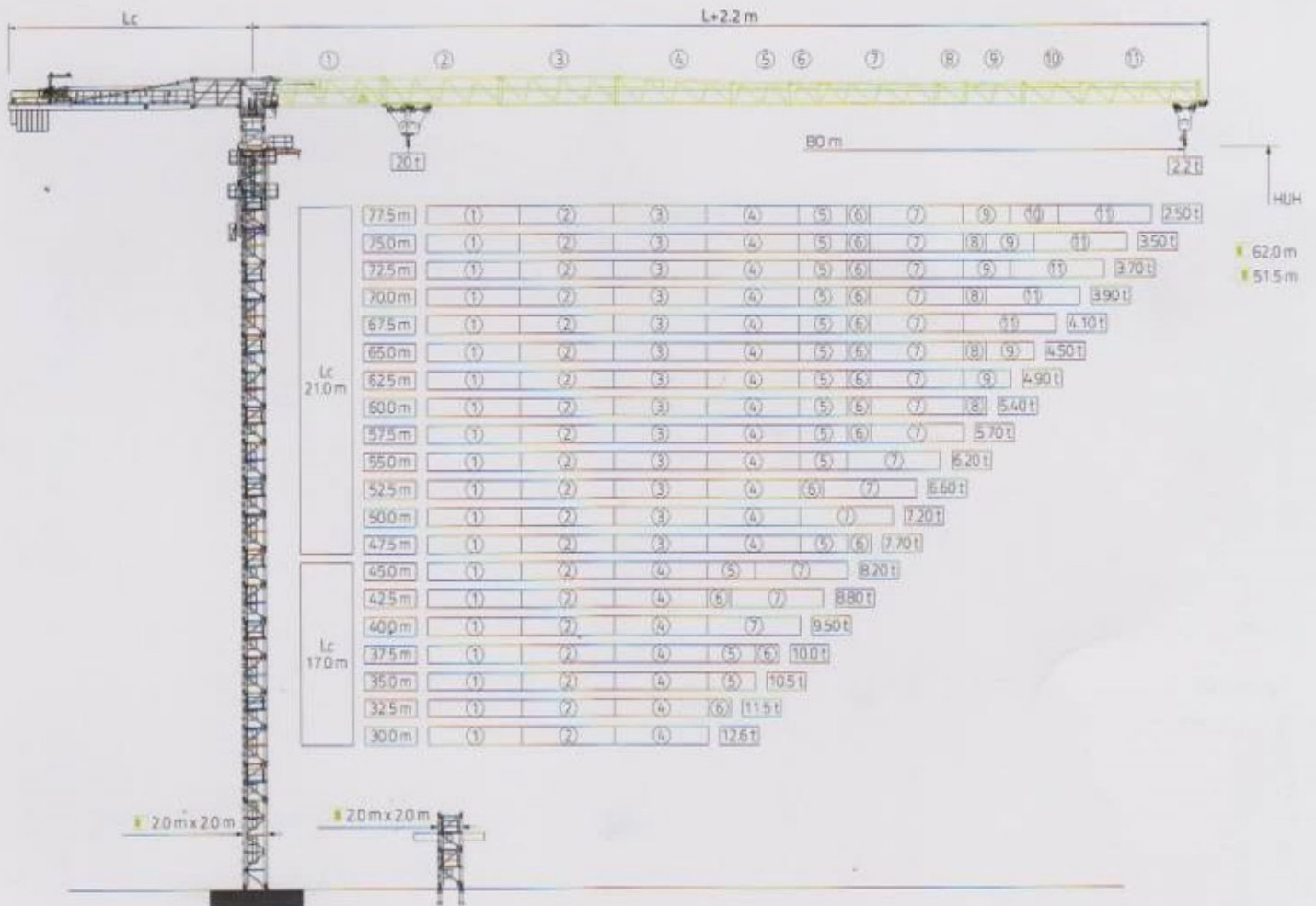
Ho	• 35-69 t
	• 30-42 t
Hv	• 15-23 t
	• 15-28 t
V	147 t

Anchorage

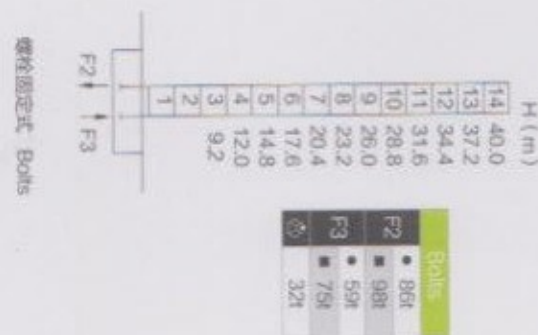
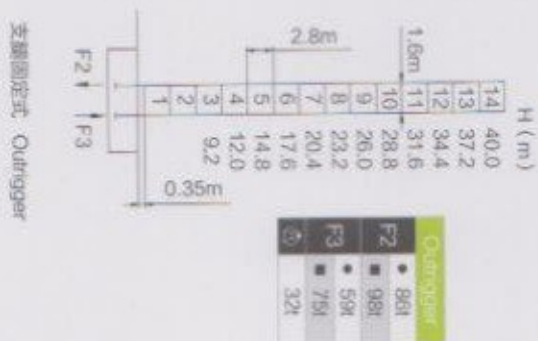
2.0 m



WA350 - 16t/20t

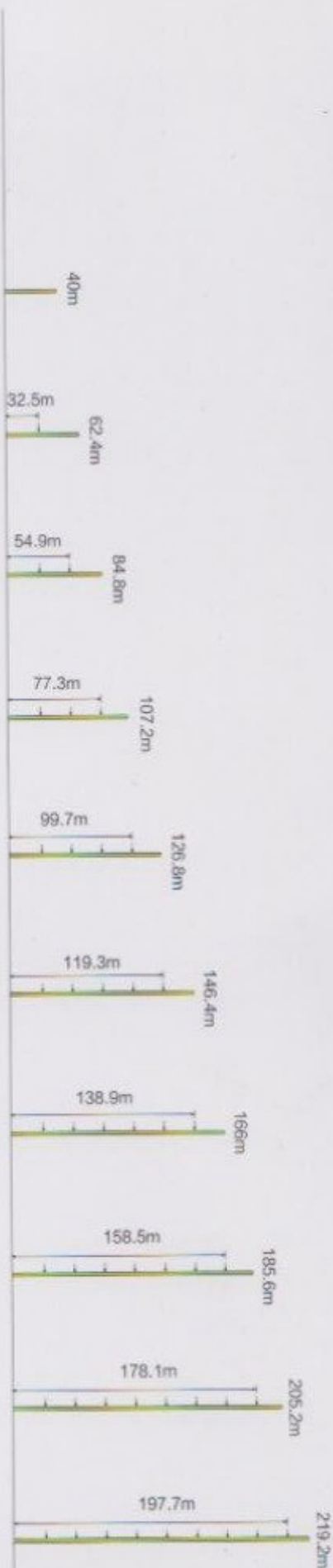


■ 塔身 Masts / 反力 Reactions / WA5610-6A



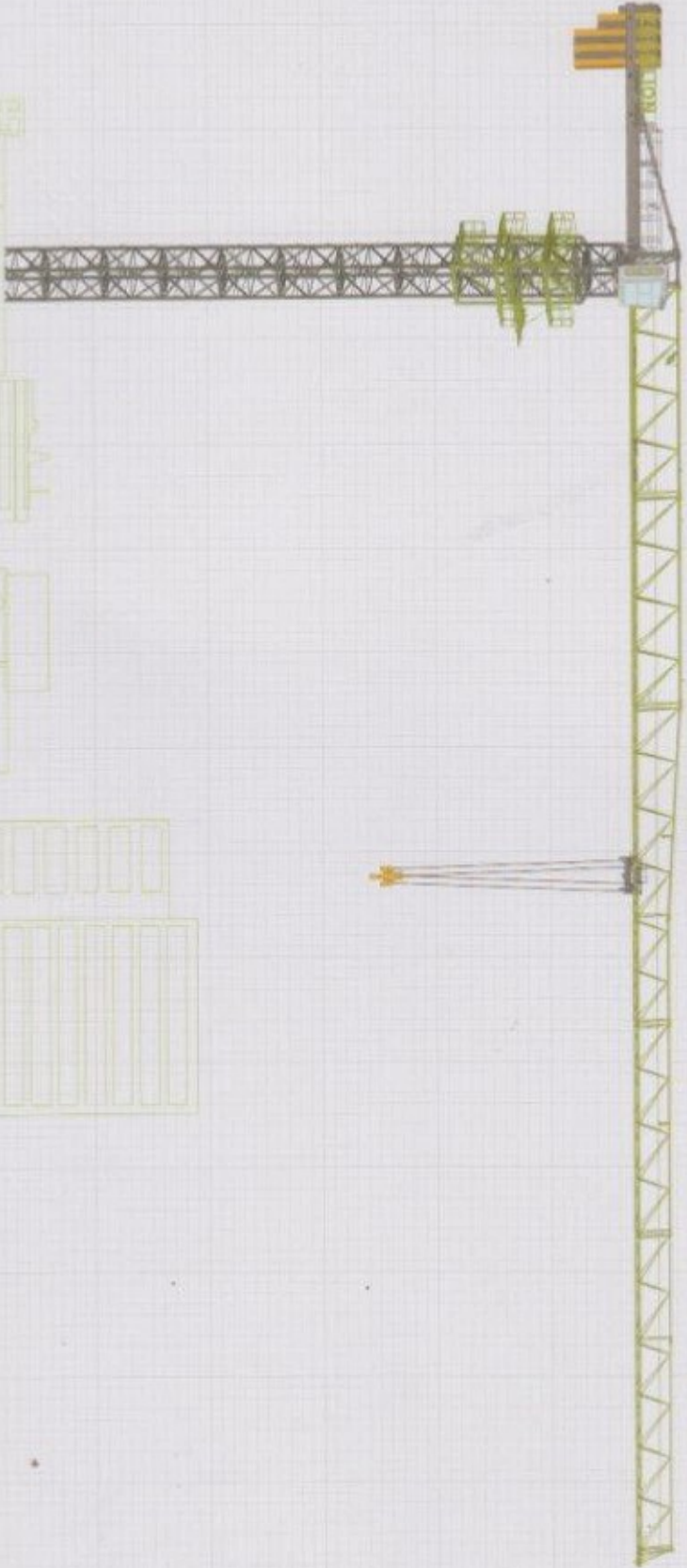
- 工作狀態下 Reaction in service
- 非工作狀態下 Reaction out of service
- ⊙ 附力點，最大起重荷狀態 (不含塔身、吊車)
(with full counter-weight and load)
- ⊙ 獨立狀態下反應量

■ 附牆 Anchorages / WA5610-6A



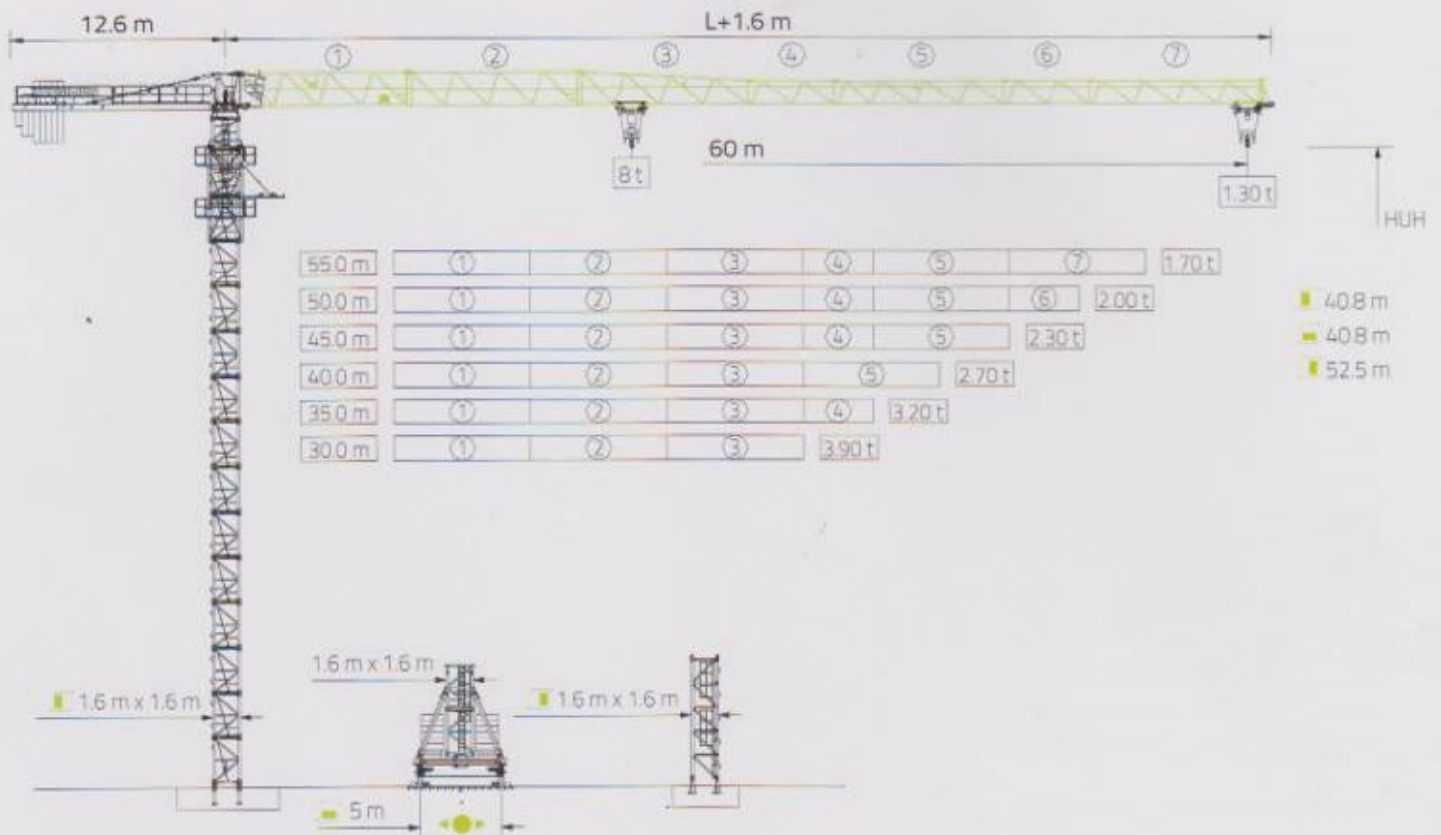
WA5610-6ET1

平头塔式起重机 Flat-Top Tower Crane



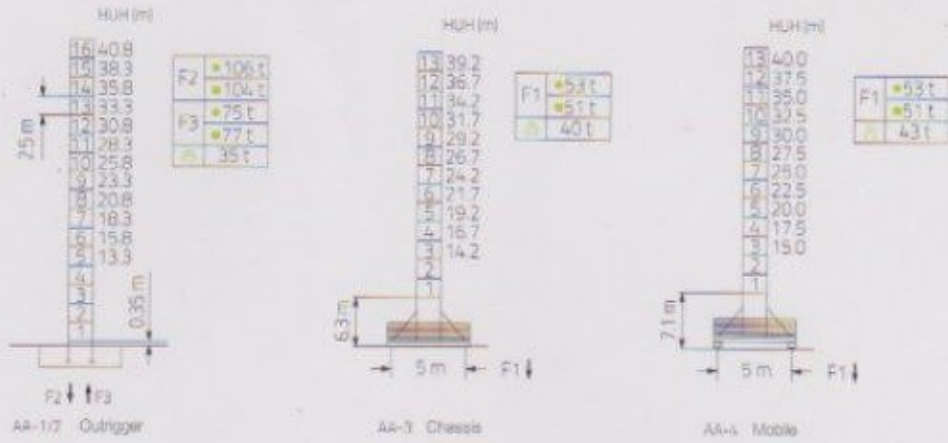
ZOOMLION

WA6013 6t/8t



1.6 m Mast EQ For WA6013-6A/8A

Mast Reactions

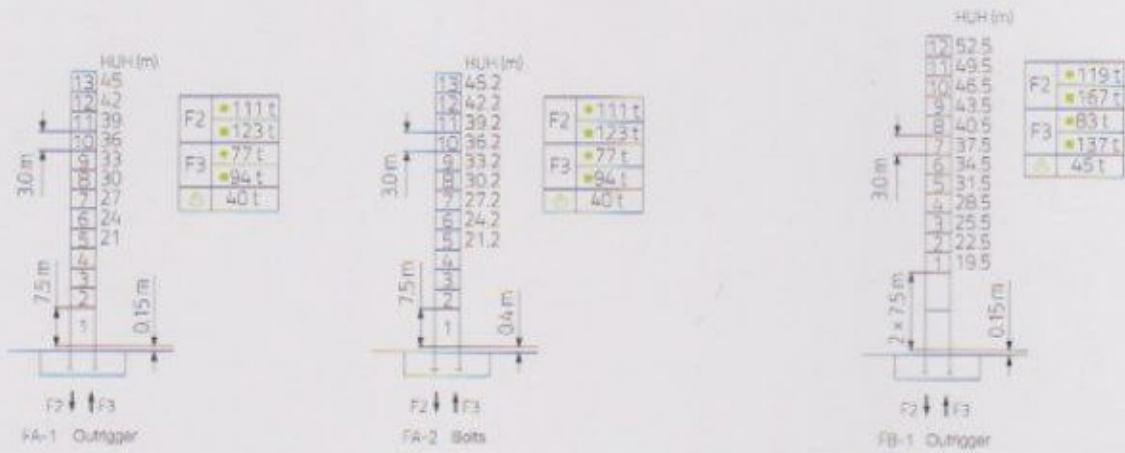


Anchorage



1.6 m Mast L46 For WA6013-6F/8F

Mast Reactions

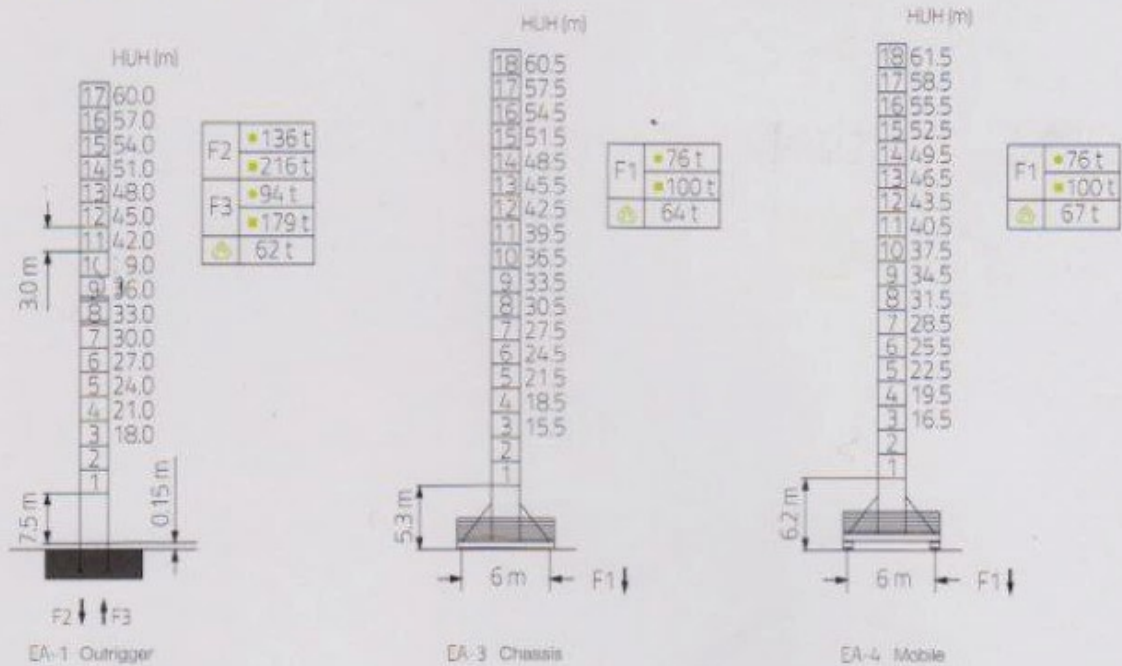


Anchorage

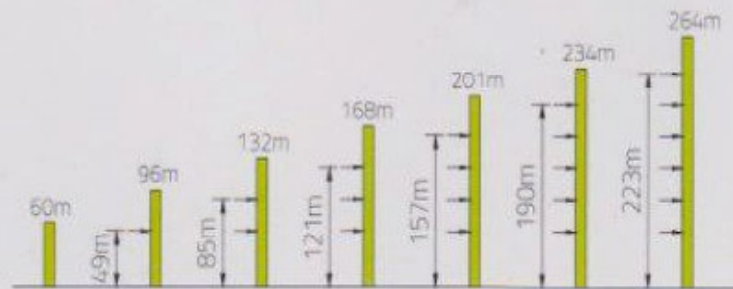


2.0 m MAST L68 For WA6017-8E/10E

Mast Reactions

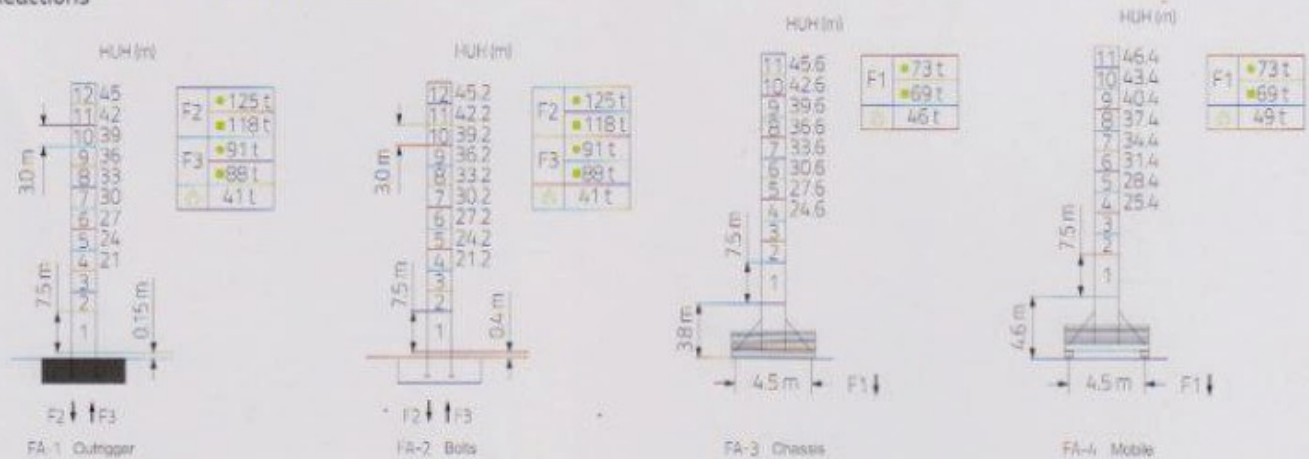


Anchorage

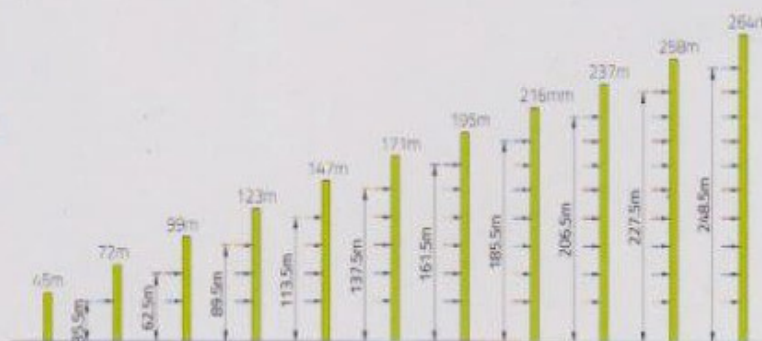


1.6 m MAST L46 For WA6017-8F/10F

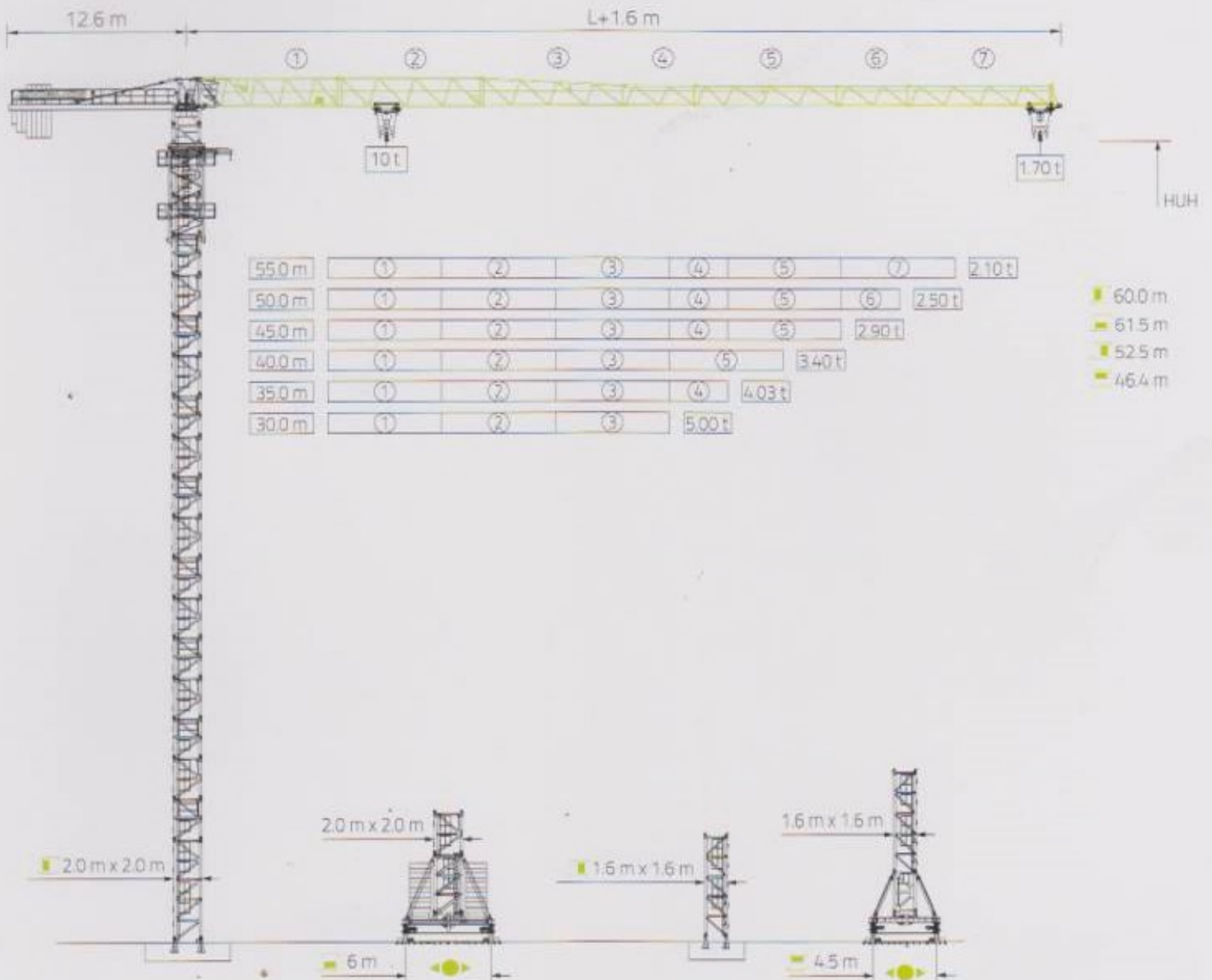
Mast Reactions



Anchorage

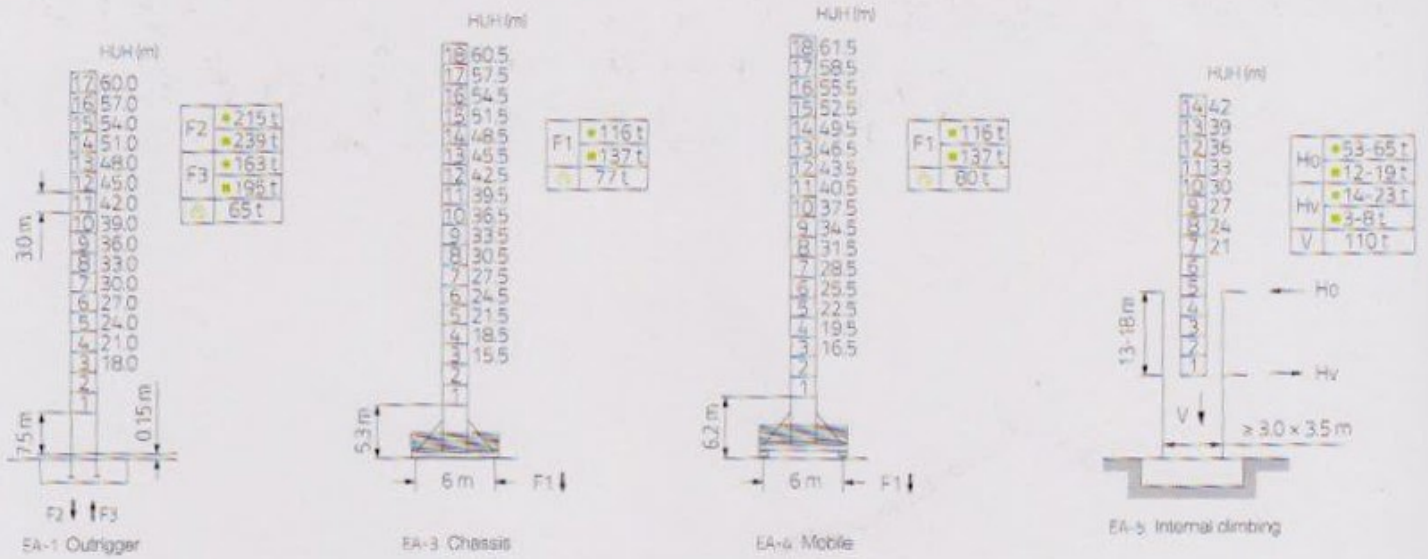


WA6017 8t/10t

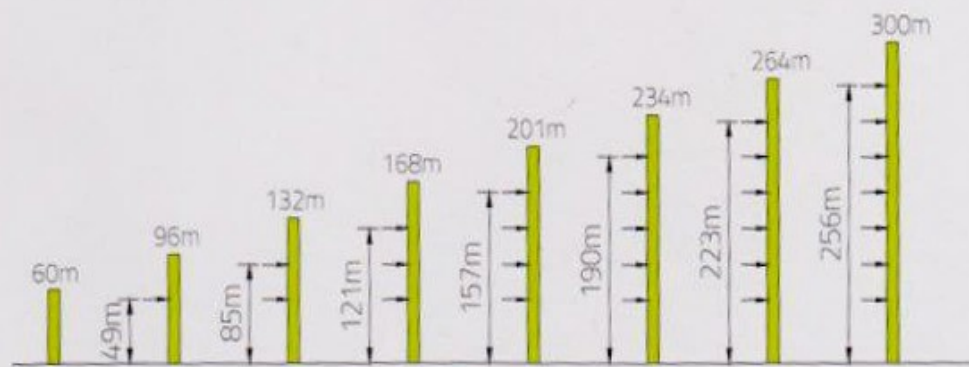


2.0 m Mast L68 For WA7025-10E/12E

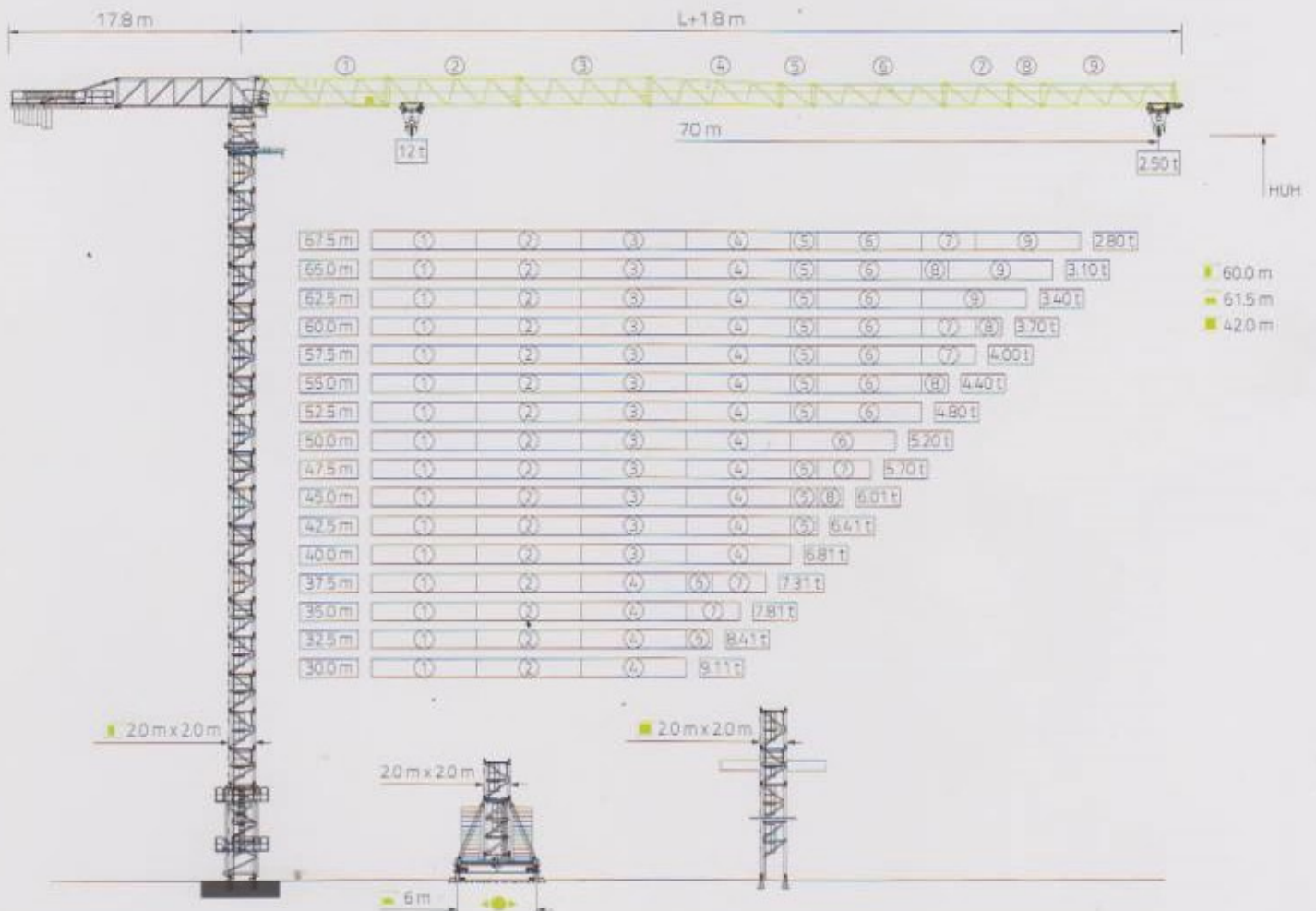
Mast Reactions



Ancorages



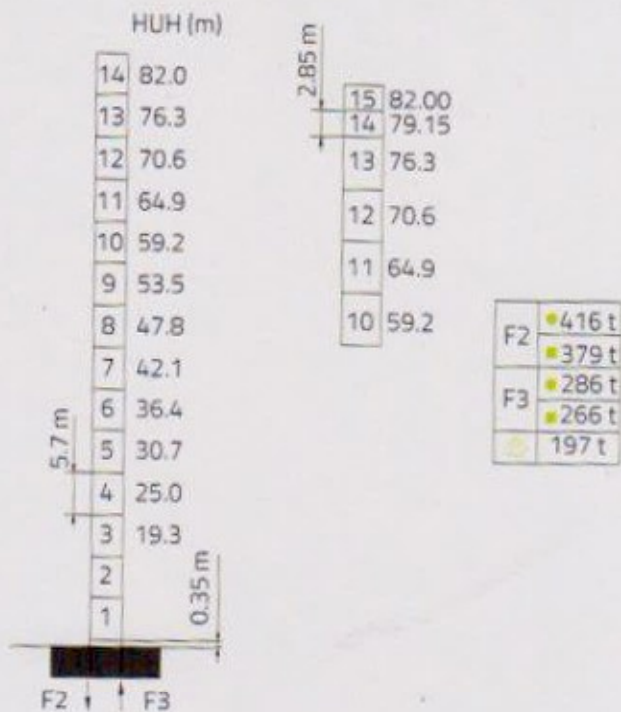
WA7025 10t/12t



Mast Reactions X30G2020 + X30G2026

mast reactions

3.0 m



3.0 m

